



NYHO Labs LLC
 Address: 37 Huntington Street, Cortland, NY 13045
 Contact Name:
 Contact Phone:
 License #: OCM-PROC-24-000081
 Sample ID: 2410SMNY0200.0810



Phyto-Farma Labs
 a Smithers company

CERTIFICATE OF ANALYSIS
 Permit #: OCM-CPL-00004

Certificate: 6698.1

LEVEL Protabs Sativa 5pk

Lot #: NY20PT241008d9S Lot Size: 1390
 Sample ID: 2410SMNY0200.0810 Sample Type: Edible
 Regulatory Category: Adult Use Amount Received: 8
 Received: 10/09/2024 Sample Collected: 10/08/2024 11:58 AM
 Sampling Location: 37 Huntington Street Published: 10/15/2024
 Cortland New York 13045



COMPLIANCE FOR RETAIL

| | | | | |
|------------------------------------|---------------------------------------|--|------------------------------|-------------------------------------|
| Cannabinoid Profile Pass | Terpenes Total Tested | Residual Solvents Pass | Pass Sample Status | |
| Pesticides Pass | Mycotoxins Pass | Water Activity Pass | | 11.5% Total THC |
| Trace Metals Pass | Microbial Contaminants Pass | Moisture Analysis Not Tested | | 0.0653% Total CBD |
| | Filth & Foreign Not Tested | | | 12.8 % Total Cannabinoids |

Report Notes: N/A

Alicia Caruso-Thomas
 Laboratory Director

10/15/2024
Alicia Caruso-Thomas

Phyto-Farma Labs
 49 John Hicks Drive
 Warwick, NY 10990
 (845) 202-9737



This is a Phyto-Farma certification that relates only to the material tested and shall not be reproduced, unless in its entirety, without written approval from Phyto-Farma. Test results are confidential, unless explicitly waived. All Pass/Fail results please reference state regulations released on 01FEB2024. Pass/Fail results do not use uncertainty, but is available upon request. The product represented has been tested by Phyto-Farma Labs using validated scientific methodologies. Note action levels are state determined thresholds for human safety and consumption. Acronym Definitions: ND - Not Detected, LOQ - Limit of Quantification, ULOQ - Upper Limit of Quantification; are terms used to describe the reliably measured smallest and largest concentrations. <LOQ> denotes the result is above detection limit, but below quantifiable limit. CFU - Colony Forming Units. Cannabis Product Sampling SOP# SOP.T.20.010.



NYHO Labs LLC
 Address: 37 Huntington Street, Cortland, NY 13045
 Contact Name:
 Contact Phone:
 License #: OCM-PROC-24-000081
 Sample ID: 2410SMNY0200.0810



Phyto-Farma Labs
 a Smithers company

CERTIFICATE OF ANALYSIS

Permit #: OCM-CPL-00004

Certificate: 6698.1

Average Cannabinoid Profile

Pass

Sample Analysis

Date: 10/15/2024 03:33 PM

SOP: NY.SOPT.40.260

Analyzed By: HPLC

Sample Weight: N/A

Analyst: Stephanie Knapp

| Analyte | LOQ (%) | Average % (w/w) | mg/serving | Homogeneity [†] |
|--|---------|-----------------|------------|--------------------------|
| Total Tetrahydrocannabinol (THC) | - | 11.5 | 10.1 | |
| Tetrahydrocannabinolic acid (THCA) | 0.500 | <LOQ | <LOQ | |
| Δ8-THC | 0.500 | <LOQ | <LOQ | |
| Δ9-THC | 0.500 | 11.4 | 10.0 | |
| Δ10-THC-RS | 0.500 | 0.0693 | 0.0610 | |
| Δ10-THC-RR | 0.500 | <LOQ | <LOQ | |
| Total Cannabidiol (CBD) | - | 0.0653 | 0.0575 | |
| Cannabinadiolic acid (CBDA) | 0.500 | 0.0302 | 0.0265 | |
| Cannabidiol (CBD) | 0.500 | 0.0388 | 0.0342 | |
| Total Active Tetrahydrocannabivarin (THCV) | - | 0.175 | 0.154 | |
| Tetrahydrocannabivarinic acid (THCVA)* | 0.500 | <LOQ | <LOQ | |
| Tetrahydrocannabivarin (THCV) | 0.500 | 0.175 | 0.154 | |
| Total Active Cannabigerol (CBG) | - | 0.353 | 0.310 | |
| Cannabigerolic acid (CBGA) | 0.500 | <LOQ | <LOQ | |
| Cannabigerol (CBG) | 0.500 | 0.353 | 0.310 | |
| Cannabidivarin (CBDV) | 0.500 | 0.0263 | 0.0232 | |
| Cannabinol (CBN) | 0.500 | 0.647 | 0.569 | |
| Cannabichromene (CBC) | 0.500 | 0.0313 | 0.0276 | |

| Cannabinoid Totals | Actual % (w/w) | mg/serving | Homogeneity [†] |
|--------------------|----------------|------------|--------------------------|
| Total Cannabinoids | 12.8 | 11.2 | |

* Analyte is not included in ISO 17025 scope of accreditation
 † Concentration of individual samples must be ±25% of the mean concentration
 Total Active CBD = CBD + (0.877 x CBDA); Total Active CBG = CBG + (0.878 x CBGA);
 Total Active THC = (Δ9THC + Δ8THC + Δ10THC-RS + Δ10THC-RR) + (0.877 x THCA);
 Total Active THCV = THCV + (0.867 x THCVA);

Serving Weight: 0.088 g

Alicia Caruso-Thomas

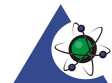
10/15/2024

Alicia Caruso-Thomas

Laboratory Director

Phyto-Farma Labs

49 John Hicks Drive
 Warwick, NY 10990
 (845) 202-9737



PJLA Testing
 Accreditation #: 121747

This is a Phyto-Farma certification that relates only to the material tested and shall not be reproduced, unless in its entirety, without written approval from Phyto-Farma. Test results are confidential, unless explicitly waived. All Pass/Fail results please reference state regulations released on 01FEB2024. Pass/Fail results do not use uncertainty, but is available upon request. The product represented has been tested by Phyto-Farma Labs using validated scientific methodologies. Note action levels are state determined thresholds for human safety and consumption. Acronym Definitions: ND - Not Detected, LOQ - Limit of Quantification, ULOQ - Upper Limit of Quantification; are terms used to describe the reliably measured smallest and largest concentrations. <LOQ> denotes the result is above detection limit, but below quantifiable limit. CFU - Colony Forming Units. Cannabis Product Sampling SOP# SOP.T.20.010.



NYHO Labs LLC
 Address: 37 Huntington Street, Cortland, NY 13045
 Contact Name:
 Contact Phone:
 License #: OCM-PROC-24-000081
 Sample ID: 2410SMNY0200.0810



Phyto-Farma Labs
 a Smithers company

CERTIFICATE OF ANALYSIS

Permit #: OCM-CPL-00004

Certificate: 6698.1

Terpene Total

Tested (0.09000%)

Sample Analysis

Date: 10/15/2024 04:13 PM

SOP: NY.SOPT.40.090

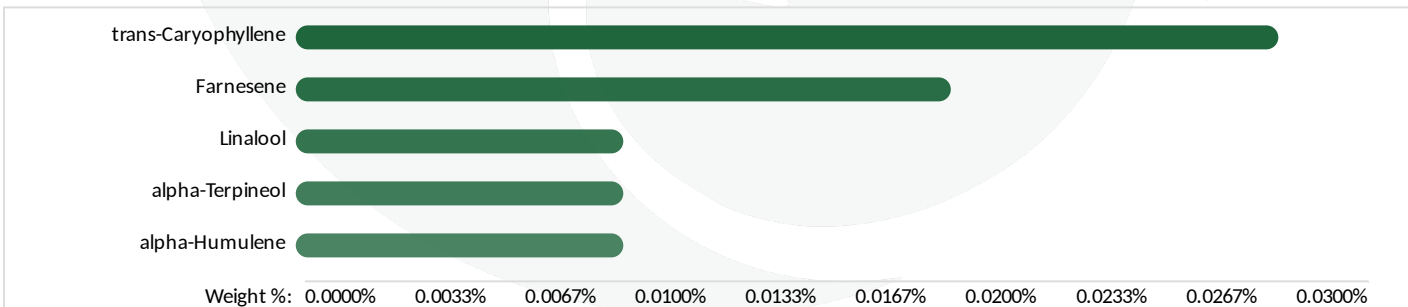
Sample Weight: 0.2268 g

Analyzed By: GC-MS

Analyst: Stephanie Knapp

| Analyte | LOQ (%) | Results (%) | Analyte | LOQ (%) | Results (%) |
|---------------------|-----------|-------------|---------------------|-----------|-------------|
| 3-Carene | 0.0004200 | <LOQ | gamma-Terpinene | 0.0004400 | <LOQ |
| alpha-Bisabolol | 0.0005000 | 0.01000 | gamma-Terpineol | 0.0003000 | <LOQ |
| alpha-Humulene | 0.0005600 | 0.01000 | Geraniol | 0.0004800 | <LOQ |
| alpha-Phellandrene | 0.0006600 | <LOQ | Geranyl acetate | 0.0006200 | <LOQ |
| alpha-Pinene | 0.0004800 | <LOQ | Guaiol | 0.0006000 | <LOQ |
| alpha-Terpinene | 0.0002600 | <LOQ | Isoborneol | 0.0003400 | <LOQ |
| alpha-Terpineol | 0.0003400 | 0.01000 | Isopulegol | 0.0006600 | <LOQ |
| beta-Myrcene | 0.0006400 | <LOQ | Limonene | 0.0007400 | <LOQ |
| beta-Pinene | 0.0006600 | <LOQ | Linalool | 0.0004600 | 0.01000 |
| Borneol | 0.0004600 | <LOQ | Menthol | 0.0004600 | <LOQ |
| Camphene | 0.0004400 | <LOQ | Nerol | 0.0005000 | <LOQ |
| Camphor | 0.0004000 | <LOQ | Pulegone (+) | 0.0005600 | <LOQ |
| Caryophyllene oxide | 0.0005800 | <LOQ | Sabinene | 0.0003400 | <LOQ |
| Cedrene | 0.0004400 | <LOQ | Sabinene Hydrate | 0.0004200 | <LOQ |
| Cedrol | 0.0005600 | <LOQ | Terpinolene | 0.0005000 | <LOQ |
| cis-Nerolidol | 0.0006800 | <LOQ | trans-b-Ocimene | 0.0004200 | <LOQ |
| cis-Ocimene | 0.0005200 | <LOQ | trans-Caryophyllene | 0.0006600 | 0.03000 |
| Eucalyptol | 0.0007200 | <LOQ | trans-Nerolidol | 0.0007200 | <LOQ |
| Farnesene | 0.0008400 | 0.02000 | Valencene | 0.0005600 | <LOQ |
| Fenchone | 0.0005000 | <LOQ | | | |

| Terpene Totals | % | Pass/Fail |
|----------------|---------|-----------|
| Total Terpenes | 0.09000 | N/A |



Alicia Caruso-Thomas
 Laboratory Director

10/15/2024
Alicia Caruso-Thomas

Phyto-Farma Labs
 49 John Hicks Drive
 Warwick, NY 10990
 (845) 202-9737



This is a Phyto-Farma certification that relates only to the material tested and shall not be reproduced, unless in its entirety, without written approval from Phyto-Farma. Test results are confidential, unless explicitly waived. All Pass/Fail results please reference state regulations released on 01FEB2024. Pass/Fail results do not use uncertainty, but is available upon request. The product represented has been tested by Phyto-Farma Labs using validated scientific methodologies. Note action levels are state determined thresholds for human safety and consumption. Acronym Definitions: ND - Not Detected, LOQ - Limit of Quantification, ULOQ - Upper Limit of Quantification; are terms used to describe the reliably measured smallest and largest concentrations. <LOQ* denotes the result is above detection limit, but below quantifiable limit. CFU - Colony Forming Units. Cannabis Product Sampling SOP# SOP.20.010.



NYHO Labs LLC
 Address: 37 Huntington Street, Cortland, NY 13045
 Contact Name:
 Contact Phone:
 License #: OCM-PROC-24-000081
 Sample ID: 2410SMNY0200.0810

CERTIFICATE OF ANALYSIS

Permit #: OCM-CPL-00004

Certificate: 6698.1

Trace Metals

Pass

Sample Analysis

Date: 10/15/2024 12:39 PM

SOP: NY.SOPT.40.050

Analyzed By: ICP-MS

Sample Weight: 0.1304 g

Analyst: Moni Kaneti

| Analyte | LOQ (µg/g) | Action Limit (µg/g) | Results (µg/g) | Pass/Fail |
|----------------|------------|---------------------|----------------|-----------|
| Antimony (Sb)* | 0.130 | 120 | <LOQ | PASS |
| Arsenic (As)* | 0.0700 | 1.50 | <LOQ | PASS |
| Cadmium (Cd)* | 0.0600 | 0.500 | <LOQ | PASS |
| Chromium (Cr)* | 0.360 | 1100 | <LOQ | PASS |
| Copper (Cu)* | 0.390 | 300 | <LOQ | PASS |
| Lead (Pb)* | 0.0800 | 0.500 | <LOQ | PASS |
| Mercury (Hg)* | 0.0100 | 3.00 | <LOQ | PASS |
| Nickel (Ni)* | 0.110 | 20.0 | 0.119 | PASS |

* Analyte is not included in ISO 17025 scope of accreditation

Mycotoxin Analysis

Pass

Sample Analysis

Date: 10/14/2024 10:20 AM

SOP: NY.SOPT.40.180

Analyzed By: LC-MS/MS

Sample Weight: 0.1 g

Analyst: Destiny Ribadeneyra

| Analyte | LOQ (µg/g) | Action Limit (µg/g) | Results (µg/g) | Pass/Fail |
|-------------------|------------|---------------------|----------------|-----------|
| Sum of Aflatoxins | - | 0.020 | 0 | PASS |
| Aflatoxin B1 | 0.0010 | 0.020 | <LOQ | PASS |
| Aflatoxin B2 | 0.0020 | 0.020 | <LOQ | PASS |
| Aflatoxin G1 | 0.0010 | 0.020 | <LOQ | PASS |
| Aflatoxin G2 | 0.0020 | 0.020 | <LOQ | PASS |
| Ochratoxin A | 0.0020 | 0.020 | <LOQ | PASS |

Alicia Caruso-Thomas

10/15/2024

Alicia Caruso-Thomas

Laboratory Director

Phyto-Farma Labs

49 John Hicks Drive
 Warwick, NY 10990
 (845) 202-9737



Accreditation #: 121747

This is a Phyto-Farma certification that relates only to the material tested and shall not be reproduced, unless in its entirety, without written approval from Phyto-Farma. Test results are confidential, unless explicitly waived. All Pass/Fail results please reference state regulations released on 01FEB2024. Pass/Fail results do not use uncertainty, but is available upon request. The product represented has been tested by Phyto-Farma Labs using validated scientific methodologies. Note action levels are state determined thresholds for human safety and consumption. Acronym Definitions: ND - Not Detected, LOQ - Limit of Quantification, ULOQ - Upper Limit of Quantification; are terms used to describe the reliably measured smallest and largest concentrations. <LOQ* denotes the result is above detection limit, but below quantifiable limit. CFU - Colony Forming Units. Cannabis Product Sampling SOP# SOP.T.20.010.



NYHO Labs LLC
 Address: 37 Huntington Street, Cortland, NY 13045
 Contact Name:
 Contact Phone:
 License #: OCM-PROC-24-000081
 Sample ID: 2410SMNY0200.0810

CERTIFICATE OF ANALYSIS
 Permit #: OCM-CPL-00004

Certificate: 6698.1

Pesticides LC

Pass

Sample Analysis

Date: 10/14/2024 09:51 AM

SOP: NY.SOPT.040.270

Analyzed By: LC-MS/MS

Sample Weight: 1 g

Analyst: Destiny Ribadeneyra

| Analyte | LOQ (ppm) | Action Limit (ppm) | Results (ppm) | Pass/Fail | Analyte | LOQ (ppm) | Action Limit (ppm) | Results (ppm) | Pass/Fail |
|------------------------|-----------|--------------------|---------------|-----------|------------------------|-----------|--------------------|---------------|-----------|
| Abamectin* | 0.0180 | 0.500 | <LOQ | PASS | Imidacloprid* | 0.00800 | 0.400 | <LOQ | PASS |
| Acephate* | 0.00700 | 0.400 | <LOQ | PASS | Indole-3-butyric acid* | 0.00700 | 1.00 | <LOQ | PASS |
| Acequinocyl* | 0.0160 | 2.00 | <LOQ | PASS | Kresoxim methyl* | 0.0120 | 0.400 | <LOQ | PASS |
| Acetamiprid* | 0.00500 | 0.200 | <LOQ | PASS | Malathion* | 0.0110 | 0.200 | <LOQ | PASS |
| Aldicarb* | 0.00500 | 0.400 | <LOQ | PASS | Metalaxyl* | 0.0120 | 0.200 | <LOQ | PASS |
| Azadirachtin* | 0.0220 | 1.00 | <LOQ | PASS | Methiocarb* | 0.00400 | 0.200 | <LOQ | PASS |
| Azoxystrobin* | 0.00600 | 0.200 | <LOQ | PASS | Methomyl* | 0.0120 | 0.400 | <LOQ | PASS |
| Bifenazate* | 0.00600 | 0.200 | <LOQ | PASS | Mevinphos* | 0.0190 | 1.00 | <LOQ | PASS |
| Bifenthrin* | 0.00300 | 0.200 | <LOQ | PASS | MGK-264* | 0.0110 | 0.200 | <LOQ | PASS |
| Boscalid* | 0.0110 | 0.400 | <LOQ | PASS | Myclobutanil* | 0.0130 | 0.200 | <LOQ | PASS |
| Carbaryl* | 0.00600 | 0.200 | <LOQ | PASS | Naled* | 0.00500 | 0.500 | <LOQ | PASS |
| Carbofuran* | 0.00500 | 0.200 | <LOQ | PASS | Oxamyl* | 0.00800 | 1.00 | <LOQ | PASS |
| Chlorantraniliprole* | 0.00600 | 0.200 | <LOQ | PASS | Paclobutrazol* | 0.0150 | 0.400 | <LOQ | PASS |
| Chloromequat chloride* | 0.0190 | 1.00 | <LOQ | PASS | Permethrins, Total* | 0.00900 | 0.200 | <LOQ | PASS |
| Chlorpyrifos* | 0.00900 | 0.200 | <LOQ | PASS | Phosmet* | 0.00700 | 0.200 | <LOQ | PASS |
| Clofentezine* | 0.0100 | 0.200 | <LOQ | PASS | Piperonyl Butoxide* | 0.00600 | 2.00 | <LOQ | PASS |
| Daminozide* | 0.00400 | 1.00 | <LOQ | PASS | Prallethrin* | 0.00800 | 0.200 | <LOQ | PASS |
| Diazinon* | 0.00700 | 0.200 | <LOQ | PASS | Propiconazole* | 0.00600 | 0.400 | <LOQ | PASS |
| Dichlorvos* | 0.0120 | 1.00 | <LOQ | PASS | Propoxur* | 0.00800 | 0.200 | <LOQ | PASS |
| Dimethoate* | 0.00600 | 0.200 | <LOQ | PASS | Pyrethrins* | 0.0140 | 1.00 | <LOQ | PASS |
| Dimethomorph* | 0.00500 | 1.00 | <LOQ | PASS | Pyridaben* | 0.00600 | 0.200 | <LOQ | PASS |
| Ethoprophos* | 0.0130 | 0.200 | <LOQ | PASS | Spinetoram, Total* | 0.00500 | 1.00 | <LOQ | PASS |
| Etofenprox* | 0.00300 | 0.400 | <LOQ | PASS | Spinosad, Total* | 0.00600 | 0.200 | <LOQ | PASS |
| Etoxazole* | 0.00500 | 0.200 | <LOQ | PASS | Spiromesifen* | 0.0130 | 0.200 | <LOQ | PASS |
| Fenhexamid* | 0.0150 | 1.00 | <LOQ | PASS | Spirotetramat* | 0.00600 | 0.200 | <LOQ | PASS |
| Fenoxycarb* | 0.0110 | 0.200 | <LOQ | PASS | Spiroxamine* | 0.00400 | 0.200 | <LOQ | PASS |
| Fenpyroximate* | 0.00200 | 0.400 | <LOQ | PASS | Tebuconazole* | 0.0120 | 0.400 | <LOQ | PASS |
| Flonicamid* | 0.00700 | 1.00 | <LOQ | PASS | Thiacloprid* | 0.00800 | 0.200 | <LOQ | PASS |
| Fludioxonil* | 0.0170 | 0.400 | <LOQ | PASS | Thiamethoxam* | 0.00800 | 0.200 | <LOQ | PASS |
| Hexythiazox* | 0.00500 | 1.00 | <LOQ | PASS | | | | | |

* Analyte is not included in ISO 17025 scope of accreditation

Alicia Caruso-Thomas
 Laboratory Director

10/15/2024
Alicia Caruso-Thomas

Phyto-Farma Labs
 49 John Hicks Drive
 Warwick, NY 10990
 (845) 202-9737



This is a Phyto-Farma certification that relates only to the material tested and shall not be reproduced, unless in its entirety, without written approval from Phyto-Farma. Test results are confidential, unless explicitly waived. All Pass/Fail results please reference state regulations released on 01FEB2024. Pass/Fail results do not use uncertainty, but is available upon request. The product represented has been tested by Phyto-Farma Labs using validated scientific methodologies. Note action levels are state determined thresholds for human safety and consumption. Acronym Definitions: ND - Not Detected, LOQ - Limit of Quantification, ULOQ - Upper Limit of Quantification, are terms used to describe the reliably measured smallest and largest concentrations. <LOQ* denotes the result is above detection limit, but below quantifiable limit. CFU - Colony Forming Units. Cannabis Product Sampling SOP# SOP.T.20.010.



NYHO Labs LLC
 Address: 37 Huntington Street, Cortland, NY 13045
 Contact Name:
 Contact Phone:
 License #: OCM-PROC-24-000081
 Sample ID: 2410SMNY0200.0810



Phyto-Farma Labs
 a Smithers company

CERTIFICATE OF ANALYSIS

Permit #: OCM-CPL-00004

Certificate: 6698.1

Pesticides GC

Pass

Sample Analysis

Date: 10/14/2024 10:15 AM

SOP: NYS.SOPT.040.271

Analyzed By: GC-MS/MS

Sample Weight: N/A

Analyst: Destiny Ribadeneyra

| Analyte | LOQ (ppm) | Action Limit (ppm) | Results (ppm) | Pass/Fail |
|--------------------------|-----------|--------------------|---------------|-----------|
| Captan* | 0.300 | 1.00 | <LOQ | PASS |
| Chlordane* | 0.0700 | 1.00 | <LOQ | PASS |
| Chlorfenapyr* | 0.100 | 1.00 | <LOQ | PASS |
| Coumaphos* | 0.190 | 1.00 | <LOQ | PASS |
| Cyfluthrin* | 0.110 | 1.00 | <LOQ | PASS |
| Cypermethrin* | 0.240 | 1.00 | <LOQ | PASS |
| Fipronil* | 0.170 | 0.400 | <LOQ | PASS |
| Imazalil* | 0.170 | 0.200 | <LOQ | PASS |
| Methyl parathion* | 0.0900 | 0.200 | <LOQ | PASS |
| Pentachloronitrobenzene* | 0.170 | 1.00 | <LOQ | PASS |
| Trifloxystrobin* | 0.110 | 0.200 | <LOQ | PASS |

* Analyte is not included in ISO 17025 scope of accreditation

Alicia Caruso-Thomas

10/15/2024

Alicia Caruso-Thomas

Laboratory Director

Phyto-Farma Labs

49 John Hicks Drive
 Warwick, NY 10990
 (845) 202-9737



Accreditation #: 121747

This is a Phyto-Farma certification that relates only to the material tested and shall not be reproduced, unless in its entirety, without written approval from Phyto-Farma. Test results are confidential, unless explicitly waived. All Pass/Fail results please reference state regulations released on 01FEB2024. Pass/Fail results do not use uncertainty, but is available upon request. The product represented has been tested by Phyto-Farma Labs using validated scientific methodologies. Note action levels are state determined thresholds for human safety and consumption. Acronym Definitions: ND - Not Detected, LOQ - Limit of Quantification, ULOQ - Upper Limit of Quantification; are terms used to describe the reliably measured smallest and largest concentrations. <LOQ* denotes the result is above detection limit, but below quantifiable limit. CFU - Colony Forming Units. Cannabis Product Sampling SOP# SOP.T.20.010.



NYHO Labs LLC
 Address: 37 Huntington Street, Cortland, NY 13045
 Contact Name:
 Contact Phone:
 License #: OCM-PROC-24-000081
 Sample ID: 2410SMNY0200.0810



Phyto-Farma Labs
 a Smithers company

CERTIFICATE OF ANALYSIS

Permit #: OCM-CPL-00004

Certificate: 6698.1

Residual Solvents

Pass

Sample Analysis

Date: 10/14/2024 10:13 AM

SOP: NYS.SOPT.040.272

Analyzed By: GC-MS

Sample Weight: 0.1066 g

Analyst: Destiny Ribadeneyra

| Analyte | LOQ (ppm) | Action Limit (ppm) | Results (ppm) | Pass/Fail |
|---|-----------|--------------------|---------------|-----------|
| 1,2-Dichloroethane (Ethylene dichloride, Ethylene chloride) | 0.100 | 5.00 | <LOQ | PASS |
| 2-Propanol (Isopropanol, Isopropyl alcohol) | 125 | 5000 | <LOQ | PASS |
| Acetone (2-Propanone) | 125 | 5000 | <LOQ | PASS |
| Acetonitrile | 23.6 | 410 | <LOQ | PASS |
| Benzene | 0.100 | 2.00 | <LOQ | PASS |
| Butanes, Total | 62.5 | 5000 | <LOQ | PASS |
| Chloroform | 1.50 | 60.0 | <LOQ | PASS |
| Dichloromethane (Methylene chloride) | 15.0 | 600 | <LOQ | PASS |
| Dimethyl sulfoxide (DMSO) | 125 | 5000 | <LOQ | PASS |
| Ethanol (Ethyl alcohol) | 125 | 5000 | <LOQ | PASS |
| Ethyl acetate (Acetic acid ethyl ester) | 125 | 5000 | <LOQ | PASS |
| Ethyl ether (Diethyl ether, 1,1'-Oxybisethane) | 125 | 5000 | <LOQ | PASS |
| Heptane (n-Heptane) | 125 | 5000 | <LOQ | PASS |
| Hexanes, Total | 14.5 | 290 | <LOQ | PASS |
| Methanol (Methyl alcohol) | 75.1 | 3000 | <LOQ | PASS |
| Pentanes, Total | 195 | 5000 | <LOQ | PASS |
| Propane | 63.0 | 5000 | <LOQ | PASS |
| Toluene (Methylbenzene) | 22.3 | 890 | <LOQ | PASS |
| Trichloroethane (1,1,1-) | 37.6 | 1500 | <LOQ | PASS |
| Tetrafluoroethane (1,1,1,2-) (HFC134a)* | 10.0 | 1000 | <LOQ | PASS |
| Xylenes, Total (ortho-, meta-, para-) | 109 | 2170 | <LOQ | PASS |

* Analyte is not included in ISO 17025 scope of accreditation

Alicia Caruso-Thomas

10/15/2024

Alicia Caruso-Thomas

Laboratory Director

Phyto-Farma Labs

49 John Hicks Drive
 Warwick, NY 10990
 (845) 202-9737



Accreditation #: 121747

This is a Phyto-Farma certification that relates only to the material tested and shall not be reproduced, unless in its entirety, without written approval from Phyto-Farma. Test results are confidential, unless explicitly waived. All Pass/Fail results please reference state regulations released on 01FEB2024. Pass/Fail results do not use uncertainty, but is available upon request. The product represented has been tested by Phyto-Farma Labs using validated scientific methodologies. Note action levels are state determined thresholds for human safety and consumption. Acronym Definitions: ND - Not Detected, LOQ - Limit of Quantification, ULOQ - Upper Limit of Quantification; are terms used to describe the reliably measured smallest and largest concentrations. <LOQ* denotes the result is above detection limit, but below quantifiable limit. CFU - Colony Forming Units. Cannabis Product Sampling SOP# SOP.T.20.010.



NYHO Labs LLC
 Address: 37 Huntington Street, Cortland, NY 13045
 Contact Name:
 Contact Phone:
 License #: OCM-PROC-24-000081
 Sample ID: 2410SMNY0200.0810



Phyto-Farma Labs
 a Smithers company

CERTIFICATE OF ANALYSIS

Permit #: OCM-CPL-00004

Certificate: 6698.1

Microbial Impurities - MDG

Pass

Sample Analysis

Date: 10/15/2024 09:47 AM

SOP: NYS.SOPT.40.273

Analyzed By: PCR

Analyst: Kristy Lee

| Analyte | Microbial Type | LOQ (CFU/g) | Allowable Limit | Results | Pass/Fail |
|--|----------------|-------------|-----------------|--------------|-----------|
| Shiga toxin-producing Escherichia coli | Bacterial | 1 | Not Detected | Not Detected | PASS |
| Salmonella species | Bacterial | 1 | Not Detected | Not Detected | PASS |
| Aspergillus flavus | Fungal | 1 | Not Detected | Not Detected | PASS |
| Aspergillus niger | Fungal | 1 | Not Detected | Not Detected | PASS |
| Aspergillus terreus | Fungal | 1 | Not Detected | Not Detected | PASS |
| Aspergillus fumigatus | Fungal | 1 | Not Detected | Not Detected | PASS |

Alicia Caruso-Thomas

10/15/2024

Alicia Caruso-Thomas

Laboratory Director

Phyto-Farma Labs

49 John Hicks Drive
 Warwick, NY 10990
 (845) 202-9737



Accreditation #: 121747

This is a Phyto-Farma certification that relates only to the material tested and shall not be reproduced, unless in its entirety, without written approval from Phyto-Farma. Test results are confidential, unless explicitly waived. All Pass/Fail results please reference state regulations released on 01FEB2024. Pass/Fail results do not use uncertainty, but is available upon request. The product represented has been tested by Phyto-Farma Labs using validated scientific methodologies. Note action levels are state determined thresholds for human safety and consumption. Acronym Definitions: ND - Not Detected, LOQ - Limit of Quantification, ULOQ - Upper Limit of Quantification; are terms used to describe the reliably measured smallest and largest concentrations. <LOQ> denotes the result is above detection limit, but below quantifiable limit. CFU - Colony Forming Units. Cannabis Product Sampling SOP# SOP.T.20.010.



NYHO Labs LLC
 Address: 37 Huntington Street, Cortland, NY 13045
 Contact Name:
 Contact Phone:
 License #: OCM-PROC-24-000081
 Sample ID: 2410SMNY0200.0810



Phyto-Farma Labs
 a Smithers company

CERTIFICATE OF ANALYSIS

Permit #: OCM-CPL-00004

Certificate: 6698.1

Microbial Impurities - TAPC

Pass

Sample Analysis

Date: 10/14/2024 09:29 AM **SOP:** NYS.SOPT.040.200
Analyzed By: Plating
Analyst: Destiny Ribadeneyra

| Analyte | LOQ (CFU/g) | Action Limit (CFU/g) | Results (CFU/g) | Pass/Fail |
|-------------------------------|-------------|----------------------|-----------------|-----------|
| Total Aerobic Bacteria/CDP-TC | 5 | 10000 | <LOQ | PASS |

Microbial Impurities - TYMC

Pass

Sample Analysis

Date: 10/15/2024 11:42 AM **SOP:** NYS.SOPT.040.200
Analyzed By: Plating
Analyst: Kristy Lee

| Analyte | LOQ (CFU/g) | Action Limit (CFU/g) | Results (CFU/g) | Pass/Fail |
|----------------------|-------------|----------------------|-----------------|-----------|
| Total Yeast and Mold | 5 | 1000 | <LOQ | PASS |
| Mold Count | 5 | 1000 | <LOQ | PASS |
| Yeast Count | 5 | 1000 | <LOQ | PASS |

Water Activity

Pass

Sample Analysis

Date: 10/15/2024 04:05 PM **SOP:** NY.SOPT.040.210
Analyzed By: Water Activity Meter
Analyst: Moni Kaneti

| Analyte | LOQ (Aw) | Action Limit (Aw) | Results (Aw) | Pass/Fail |
|----------------|----------|-------------------|--------------|-----------|
| Water Activity | 0.25 | 0.85 | 0.39 | PASS |

Alicia Caruso-Thomas
 Laboratory Director

10/15/2024
Alicia Caruso-Thomas

Phyto-Farma Labs
 49 John Hicks Drive
 Warwick, NY 10990
 (845) 202-9737



This is a Phyto-Farma certification that relates only to the material tested and shall not be reproduced, unless in its entirety, without written approval from Phyto-Farma. Test results are confidential, unless explicitly waived. All Pass/Fail results please reference state regulations released on 01FEB2024. Pass/Fail results do not use uncertainty, but is available upon request. The product represented has been tested by Phyto-Farma Labs using validated scientific methodologies. Note action levels are state determined thresholds for human safety and consumption. Acronym Definitions: ND - Not Detected, LOQ - Limit of Quantification, ULOQ - Upper Limit of Quantification; are terms used to describe the reliably measured smallest and largest concentrations. <LOQ* denotes the result is above detection limit, but below quantifiable limit. CFU - Colony Forming Units. Cannabis Product Sampling SOP# SOP.T.20.010.